

Busy Engineer's FAQ - read this carefully first, especially the parts about Fixing Disk storage and shutdown procedures.

Q: How is Premiere's XDS PRO4-P system new and different?

A: The new XDS PRO4-P system is different from the StarGuide III (with EDAS) system in that the entire operation of audio decoding and spot insertion is now integrated inside the receiver. There are no more EDAS cards, relay cards, and associated wiring. This makes the system simpler to implement and use.

Then new Premiere XDS PRO4-P system is different from the XDS PRO4 system in that the internal operating system is unique – hence the two systems are not interchangeable.

Also, many radio networks are now using a “distributed stored content” distribution model for efficiency and flexibility. So even if the receivers worked identically, the stored content in each receiver is completely unique network to network – providing a further hurdle to interoperability.

Q. I've received the XDS PRO4-P, I'm busy... what's the minimum that I have to do?

A: A “Quick Start Guide” was sent with the receiver, and can also be found here:

<http://myxdsreceiver.premiereradio.com/aff/Documentation/XDSPRO4P%20QuickStartGuide.pdf>

Please follow the “Quick Start Guide” instructions carefully.

Handy info:

You can listen to the audio outputs via the front speaker by first making sure you are at the highest level menu,

Press Set

Right arrow over to select Audio Ports you wish to monitor

Press Set

Push 3 (Headphone)

Use Up arrow to main menu

Adjust audio with right/left arrows

You can also see the VU Meters by pressing VU button

Q. I've followed the “Quick Start Guide”... now what do I do?

A: You need to verify that your receiver has the latest code and a few housekeeping routines are run:

Receiver will boot up, connect with system... and download latest software if needed.

When downloading software the update LED blinks fast.

When software is downloaded but not yet installed the Update LED is solid.

When receiver is rebooted, software loads, then Update LED is off.

Initially, you may be prompted to “fix storage” on the LCD screen – this is important.

Follow the instructions on the screen – ex: push 2 and the receiver will automatically scan and perform routine maintenance on the receiver's storage devices. This may take 8 – 10 minutes. After this process is finished, it is recommended you reboot from the front panel – instructions:

“PLEASE FIX STORAGE”

If your XDS receiver displays this message on the home screen after this week's firmware upgrade please follow the steps below to clear the alarm:

If prompted press “2” at the home screen or follow steps below...

The front panel keyboard sequence is :

Press the 'SET' Key ->

'Status ' - >
Press the 'Set ' Key ->
'Active Faults ' - >

Press the right arrow key to 'STORAGE STATUS '

At the ' STORAGE STATUS ' page Press key '3' - "FIX"

This will initiate a "fix" that will take approximately 8 minutes to complete.

To reboot your XDS receiver without unplugging:

Press 'Set' (twice if back light is off)
Right Arrow to 'Set Up' - Press 'Set '
Left Arrow to 'Reboot' - Press 'Set '
Press '1' - Reboot

Q: Why do I have to fix the storage on my XDS receiver... I thought this wasn't a pc based receiver?

A: Good question... while we tried to make this a Linux based "appliance", the drives are still large and must be kept healthy. The easiest way to keep them healthy is to make sure the receiver power is NEVER removed abruptly – so by all means put the receiver on a UPS... even a small one... and when you have to remove power to the receiver for any reason, shut it down properly (instructions below, you'll thank us later, really).

How to gently (properly) shut down your XDS receiver * PRIOR TO REMOVING POWER! ***:**

Press 'Set' (twice if back light is off)
Press right Arrow to 'Set Up' - Press 'Set '
Left Arrow to 'Reboot' - Press 'Set '
Press '2' - Unplug

Q: What do I have to do to get this receiver functioning with programming?

A: You have to login to the receiver, you have to schedule shows and assign relays to those shows, and you have to hook up the audio and relay connectors to your gear. (Program Associated Data PAD such as artist and song title is coming soon).

=====

The following tutorial will explain, step by step, how to schedule Rush Limbaugh on your XDS PRO-4 satellite receiver:

1. Access <http://myxdsreceiver.premiereradio.com> and input your serial number and password, both of which may be accessed from the front panel of the receiver itself.*

Welcome to the Affiliate Website.

First-time visitors: Sign in using your receiver serial number and the daily password issued by your receiver.
 Return visitors: Sign in using your receiver serial number and friendly password. If you lost or did not set a friendly password, sign in as a first-time visitor.

Sign In

Receiver S/N: XDSP-

Password:

[Login](#)

Passwords are case sensitive.

- After entering your sign-in information, you will be prompted to choose the action you wish to perform. Select "View or Change my Schedules." You will be presented with a list of stations assigned to your receiver. Choose the station on which you carry the Fox 5 Minute report.

What would you like to do?

☒ View or Change my Schedules.

☐ Set my Password, Time Zone, and other receiver options.

☐ Set my Relay Mappings.

☐ Set my Port Schedules.

Please select the station whose schedule you wish to view or change

ZJAS-FM

ZTER-FM

ZJAS-FM

ZJEN-FM

ZDAN-FM

- A calendar view of your programming schedule should now be visible. Click on the "Program List" tab at the upper left corner of the screen. You will see a list of programs authorized to your receiver:

Please select a program to view its network feeds and scheduled show times.

Rush Limbaugh

The Sean Hannity Program

Glenn Beck

Dr Laura

Rush Limbaugh

Jim Rome

Fox 5 Min News

Dr Dean

Test Channel

- Select "Rush Limbaugh" and click OK. Three hours will be available for scheduling, as pictured below. Click "Create a new station schedule..."

Network Feeds of Rush Limbaugh on ZJAS-FM Select New Program

Network Feed Time 9:05:59 AM to 10:00 AM (PT) every Mo-Fr starting 11/8/2007.
 Create a new station schedule using this feed...

Network Feed Time 10:05:59 AM to 11:00 AM (PT) every Mo-Fr starting 11/8/2007.
 Create a new station schedule using this feed...

Network Feed Time 11:05:59 AM to 12:00 PM (PT) every Mo-Fr starting 11/8/2007.
 Create a new station schedule using this feed...

Commit Schedule to Receiver

5. The Schedule Editor is now displayed. If you intend to broadcast the program live, simply click the "Add" button at the bottom of the screen. If you wish to delay the show for a later time, click the "Broadcast the program delayed..." radio button. In the "Local Air Start" window, type in the time of day in which you wish to air the program. Then select the number of days from the box directly to the right. Finally, click "Add." You will be returned to the scheduling screen. Repeat this step for all three hours.

Edit Schedule

Schedule 'Rush Limbaugh' on ZJAS-FM

Network Feed Time 9:05:59 AM to 10:00 AM (PT) every Mo-Fr starting 11/8/2007.

What would you like to do with this program?

☒ Broadcast the program **live** at the time of the Network Feed.

☐ Broadcast the program **delayed** by automatically capturing the program and then broadcasting it at a Local Air Time of my choice.

☐ Capture the program (**record**) to a file to manually play it back later using M&C command or Opto.

Set which Local Air Times to broadcast from the live network feed.

Local Air Start

Local Air End ☒ Use Complete Feed

Network Feed starts at 9:05:59 AM and ends at 10:00 AM (PT).

This schedule will play the entire network feed live (concurrently with the network feed).

Check the network feed days to use for this schedule.

☒ Monday ☒ Tuesday ☒ Wednesday ☒ Thursday ☒ Friday ☐ Saturday ☐ Sunday

Edit Schedule

Schedule 'Rush Limbaugh' on ZJAS-FM

Network Feed Time 9:05:59 AM to 10:00 AM (PT) every Mo-Fr starting 11/8/2007.

What would you like to do with this program?

- ☐ Broadcast the program **live** at the time of the Network Feed.
- ☒ Broadcast the program **delayed** by automatically capturing the program and then broadcasting it at a Local Air Time of my choice.
- ☐ Capture the program (**record**) to a file to manually play it back later using M&C command or Opto.

Set which Local Air Times to broadcast for the delayed program.

Local Air Start

Local Air End ☒ Use Complete Feed

Network Feed starts at 9:05:59 AM and ends at 10:00 AM (PT).

This schedule will play the entire network feed delayed 0:00:00 (HH:MM:SS) from the network feed.

Check the network feed days to use for this schedule.

☒ Monday ☒ Tuesday ☒ Wednesday ☒ Thursday ☒ Friday ☐ Saturday ☐ Sunday

6. When you are finished, your schedule should look similar to the picture below. Simply click "Commit schedule to receiver," and you are finished.

Network Feeds of Rush Limbaugh on ZJAS-FM Select New Program

Network Feed Time 9:05:59 AM to 10:00 AM (PT) every Mo-Fr starting 11/8/2007.

Live Broadcast: Local Air Time 9:05:59 AM to 10:00 AM (PT) every Mo-Fr starting 11/18/2008. edit delete

Create a new station schedule using this feed...

Network Feed Time 10:05:59 AM to 11:00 AM (PT) every Mo-Fr starting 11/8/2007.

Live Broadcast: Local Air Time 10:05:59 AM to 11:00 AM (PT) every Mo-Fr starting 11/18/2008. edit delete

Create a new station schedule using this feed...

Network Feed Time 11:05:59 AM to 12:00 PM (PT) every Mo-Fr starting 11/8/2007.

Live Broadcast: Local Air Time 11:05:59 AM to 12:00 PM (PT) every Mo-Fr starting 11/18/2008. edit delete

Create a new station schedule using this feed...

In this tutorial you will learn how to map the relays for Premiere programming in general, and Rush Limbaugh specifically, to your XDS receiver:

7. Access <http://myxdsreceiver.premiereradio.com> and input your serial number and password, both of which may be accessed from the front panel of the receiver itself.*

Welcome to the Affiliate Website.

First-time visitors: Sign in using your receiver serial number and the daily password issued by your receiver.
 Return visitors: Sign in using your receiver serial number and friendly password. If you lost or did not set a friendly password, sign in as a first-time visitor.

Sign In

Receiver S/N: XDSP-

Password:

Passwords are case sensitive.

8. After entering your sign-in information, you will be prompted to choose the action you wish to perform. Select "Set my Relay Mappings." You will see two boxes, one for the Relay A port and one for the Relay B port, both of which will at first contain the text "No Cue Mappings."

What would you like to do?

☐ View or Change my Schedules.

☐ Set my Password, Time Zone, and other receiver options.

☒ Set my Relay Mappings.

☐ Set my Port Schedules.

Home > Relay Mappings

Cue Relay Mappings for Receiver Serial Number: 301408

Click in a cell in the tables below to expand the cells in that column.

Relay A - DB37M
No Cue Mappings
Relay B - DB37M
No Cue Mappings

9. Click the "Edit" button, and you will see a grid containing 16 columns, one for each relay number. Here, you will input the relays for the Rush Limbaugh. For simplicity it is suggested that the Local relay be entered into the "Rly 1" column, the Network Break into "Rly 2," and so forth. However, the wiring needs of your station may dictate another arrangement. It is ultimately up to you. To obtain the needed relay codes, go to <http://engineering.premiereradio.com/> and click on the "XDS Relay Mapping" tab on the left side of the screen. When you are finished, it will look similar to the picture below:

Cue Relay Mappings for Receiver Serial Number: 300355

Click in a cell in the tables below to expand the cells in that column.

Save Cancel

Relay A - DB37M

Rly 1	Rly 2	Rly 3	Rly 4	Rly 5	Rly 6	Rly 7	Rly 8	Rly 9	Rly 10	Rly 11	Rly 12	Rly 13	Rly 14	Rly 15	Rly 16
RLLOCAL	RLM	RLF	RLL												
RLWLOCAL	RLV	RLV	RLV												

Relay B - DB37M

Rly 1	Rly 2	Rly 3	Rly 4	Rly 5	Rly 6	Rly 7	Rly 8	Rly 9	Rly 10	Rly 11	Rly 12	Rly 13	Rly 14	Rly 15	Rly 16

- When your relays have been input, click on the "Save" button. You will be returned to the previous screen, where the newly input relays will be displayed. It should be noted here that, while only two rows are at first visible, clicking "Edit" again will make more available. This will continue to happen as needed. It should also be noted that **the mapping codes must be entered exactly as they appear on the list.**
- One final point to be made is the answer to a recurring question that has come up over the course of development. Broadcasting two different Premiere syndicated programs from different ports simultaneously (as in the case of multiple cluster stations sharing the same receiver) may cause relay closures for these shows to interfere with one another. For example, if you have the Rush Limbaugh show broadcasting live on station ABCD from Port A, and Jim Rome on station WXYZ from Port B, the above pictured relay map will become problematic. If you have a situation like this, the problem can be solved by moving one set of relay codes to Port B, or to another number group on Port A (5-9 for example). It all depends on the desired wiring arrangement in your individual studio.

*Retrieving the serial number and password from your receiver is done by pressing "Set," then scrolling to the SETUP option and pressing "Set" again. Here you will see the serial number and a PWD at the bottom right of the screen. Press "3" to retrieve the password.

=====

Here's an example how to program your receiver to play Fox 5 Min News inside the open :00-:06 minutes beginning in most talk programming hours:

How to schedule the Fox 5 Minute Report to broadcast each hour without conflicting with normal long-form programming:

- Access <http://myxdsreceiver.premiereradio.com> and input your serial number and password, both of which may be accessed from the front panel of the receiver itself.

Welcome to the Affiliate Website.

First-time visitors: Sign in using your receiver serial number and the daily password issued by your receiver.
 Return visitors: Sign in using your receiver serial number and friendly password. If you lost or did not set a friendly password, sign in as a first-time visitor.

Sign In

Receiver S/N: XDSP-

Password: [Login](#)

Passwords are case sensitive.

13. After entering your sign-in information, you will be prompted to choose the action you wish to perform. Select "View or Change my Schedules." You will be presented with a list of stations assigned to your receiver. Choose the station on which you carry the Fox 5 Minute report.

What would you like to do?

☒ View or Change my Schedules.

☐ Set my Password, Time Zone, and other receiver options.

☐ Set my Relay Mappings.

☐ Set my Port Schedules.

[OK](#) [Cancel](#)

Please select the station whose schedule you wish to view or change

[v](#)

[OK](#) [Cancel](#)

14. A calendar view of your programming schedule should now be visible. Click on the "Program List" tab at the upper left corner of the screen. You will see the following list of options:

Please select a program to view its network feeds and scheduled show times.

[v](#)

[OK](#) [Cancel](#)

15. After selecting "Fox 5 Min News," you will see a list of programming hours available for scheduling. Every hour must be scheduled, but for the purposes of this tutorial select an hour during which a long-form talk program is, or will be, scheduled, by clicking "Create a new station schedule..." Please note that the listed network feed time goes (for example) from 3:45 to 4:45. This means that, if you want to schedule the top-hour report for 4:00, you must schedule the 3:45 block.

X-Digital Systems
XDS-NMS
 Network Management System

Home > Programming and Scheduling | Calendar View | Program List | Programming and Scheduling | Relay Mappings | Port Schedules | Configuration | Help

Network Feeds of Fox 5 Min News

Select New Program

Network Feed Time 3:45:59 AM to 4:45:49 AM (ET) every Mo-Su starting 5/28/2008.
 Create a new station schedule using this feed...

Network Feed Time 4:45:59 AM to 5:45:49 AM (ET) every Mo-Su starting 6/6/2008.
 Create a new station schedule using this feed...

Network Feed Time 5:45:59 AM to 6:45:49 AM (ET) every Mo-Su starting 5/21/2008.
 Live Broadcast: Local Air Time 6:00 AM to 6:05 AM (ET) every Mo-Su starting 7/14/2008. [edit](#) [delete](#)
 Create a new station schedule using this feed...

Network Feed Time 6:45:59 AM to 7:45:48 AM (ET) every Mo-Su starting 5/21/2008.
 Live Broadcast: Local Air Time 7:00 AM to 7:05 AM (ET) every Mo-Su starting 7/14/2008. [edit](#) [delete](#)
 Create a new station schedule using this feed...

16. You will now see a menu of options. Unclick the "Use complete feed" button and edit the "Local Air Start" to :00 and "Local Air End" to :05 as pictured below. Finally, click the "Add" button. You will be returned to the Schedule screen. Repeat this step as necessary.

Edit Schedule

Schedule 'Fox 5 Min News'

Network Feed Time **3:45:59 AM to 4:45:49 AM** (ET) every Mo-Su starting 5/28/2008.

What would you like to do with this program?

☒ Broadcast the program **live** at the time of the Network Feed.

☐ Broadcast the program **delayed** by automatically capturing the program and then broadcasting it at a Local Air Time of my choice.

☐ Capture the program (**record**) to a file to manually play it back later using M&C command or Opto.

Set which Local Air Times to broadcast from the live network feed.

Local Air Start

Local Air End ☐ Use Complete Feed

Network Feed starts at 3:45:59 AM and ends at 4:45:49 AM (ET).

This schedule will play 0:45:49 (HH:MM:SS) of the network feed live (concurrently with the network feed) and will start 0:14:01 (HH:MM:SS) into the program's network feed.

Check the network feed days to use for this schedule.

☒ Monday ☒ Tuesday ☒ Wednesday ☒ Thursday ☒ Friday ☒ Saturday ☒ Sunday

17. When finished scheduling, scroll to the bottom of the programming list and click the "Commit Schedule to Receiver" button, pictured below; you will receive an alert that the schedule has been changed, but will remain on the same screen. If you return to the "Calendar View" the updated information will appear.

Network Feed Time 8:45:59 PM to 9:45:49 PM (MT) every Mo-Su starting 5/28/2008.
 Create a new station schedule using this feed...

Network Feed Time 9:45:59 PM to 10:45:49 PM (MT) every Mo-Su starting 5/28/2008.
 Create a new station schedule using this feed...

Network Feed Time 10:45:59 PM to 11:45:49 PM (MT) every Mo-Su starting 5/28/2008.
 Create a new station schedule using this feed...

Network Feed Time 11:45:59 PM to 12:45:49 AM (MT) every Mo-Su starting 5/28/2008.
 Create a new station schedule using this feed...

Network Feed Time 12:45:59 AM to 1:45:49 AM (MT) every Mo-Su starting 5/29/2008.
 Create a new station schedule using this feed...

Commit Schedule to Receiver

=====

=====

Here is an example of how to record Dr. Dean Edell's one hour daily show and play it back on the weekend as a five hour compilation

Here it will be explained how to compile Dr. Dean's weekday programming into a 5 hour programming block. For demonstration purposes, it is assumed that your goal is to broadcast on Saturday. If another day is desired, simply alter the information input as needed.

- Access <http://myxdsreceiver.premiereradio.com> and input your serial number and password, both of which may be accessed from the front panel of the receiver itself.*

Welcome to the Affiliate Website.

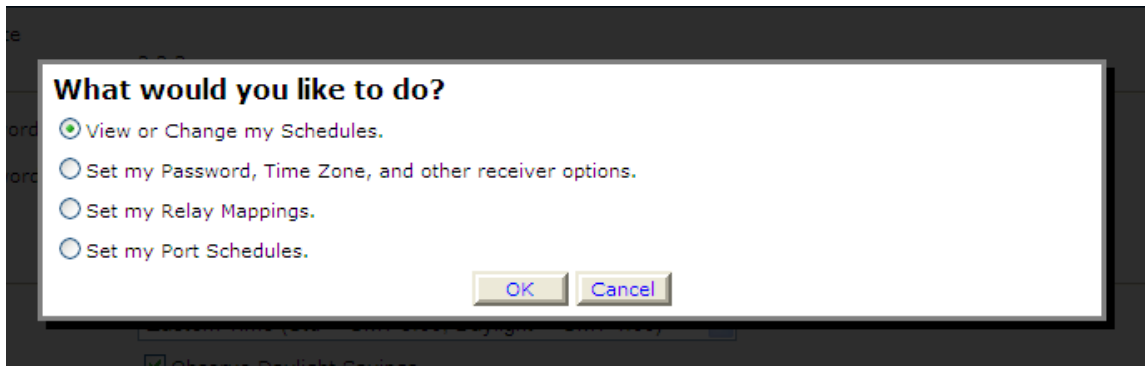
First-time visitors: Sign in using your receiver serial number and the daily password issued by your receiver.
 Return visitors: Sign in using your receiver serial number and friendly password. If you lost or did not set a friendly password, sign in as a first-time visitor.

Sign In

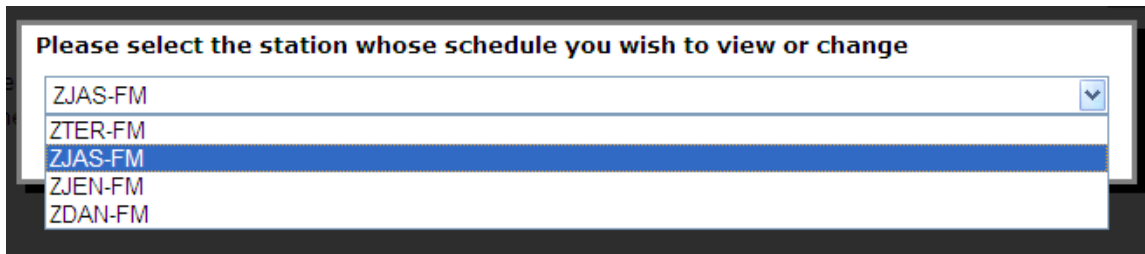
Receiver S/N: XDSP-

Password:

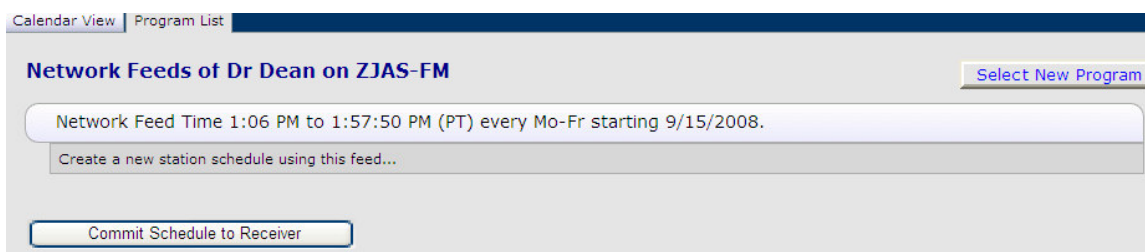
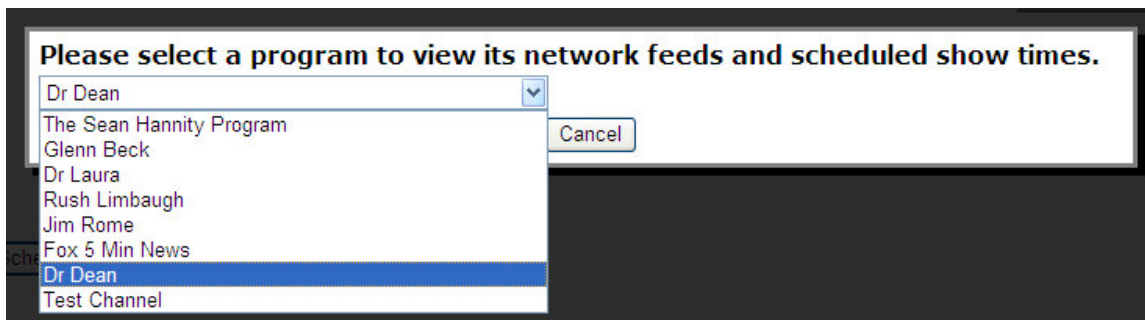
Passwords are case sensitive.



19. After signing in, you will see the list of options pictured above. Choose "View or Change my Schedules," and pick the appropriate station letters from the menu presented:



20. A calendar view of your programming schedule should now be visible. Click on the "Program List" tab at the upper left corner of the screen. Choose "Dr. Dean" from the resulting menu:



21. From the Network Feeds screen pictured above, click "Create a new station schedule..." You will see the following:

Schedule 'Dr Dean'

Network Feed Time 1:06 PM to 1:57:50 PM (PT) every Mo-Fr starting 9/15/2008.

What would you like to do with this program?

☐ Broadcast the program **live** at the time of the Network Feed.

☒ Broadcast the program **delayed** by automatically capturing the program and then broadcasting it at a Local Air Time of my choice.

☐ Capture the program (**record**) to a file to manually play it back later using M&C command or Opto.

Set which Local Air Times to broadcast for the delayed program.

Local Air Start

Local Air End ☒ Use Complete Feed

Network Feed starts at 1:06 PM and ends at 1:57:50 PM (PT).

This schedule will play the entire network feed delayed 120:00:00 (HH:MM:SS) from the network feed.

Check the network feed days to use for this schedule.

☒ Monday ☐ Tuesday ☐ Wednesday ☐ Thursday ☐ Friday ☐ Saturday ☐ Sunday

22. Select "Broadcast the program delayed..." The Air Start and End times will become available, as well as a menu for choosing the number of days to delay the broadcast by. Choose "5 days after Feed Date" for now, as this is the Monday hour. Then, from the bottom list of options, un-select all days of the week but Monday.
23. Click the "Add" button at the bottom of the screen. After being returned to the Network Feeds list, you will see a scheduled hour of programming in green text under Dr. Dean.

Network Feeds of Dr Dean [Select New Program](#)

Network Feed Time 1:06 PM to 1:57:50 PM (PT) every Mo-Fr starting 9/15/2008.

Time-Delayed Broadcast: Local Air Time 1:06 PM to 1:57:50 PM (PT) every Sa starting 11/18/2008. [edit](#) [delete](#)

Create a new station schedule using this feed...

Commit Schedule to Receiver

24. Follow steps 4-6 for Tuesday, with the times and dates changed appropriate to the day. For example, note the "Local Air Start" and number of days delayed:

Network Feed Time 1:06 PM to 1:57:50 PM (PT) every Mo-Fr starting 9/15/2008.

What would you like to do with this program?

☐ Broadcast the program **live** at the time of the Network Feed.

☒ Broadcast the program **delayed** by automatically capturing the program and then broadcasting it at a Local Air Time of my choice.

☐ Capture the program (**record**) to a file to manually play it back later using M&C command or Opto.

Set which Local Air Times to broadcast for the delayed program.

Local Air Start

Local Air End ☒ Use Complete Feed

Network Feed starts at 1:06 PM and ends at 1:57:50 PM (PT).

This schedule will play the entire network feed delayed 97:00:00 (HH:MM:SS) from the network feed.

Check the network feed days to use for this schedule.

☐ Monday ☒ Tuesday ☐ Wednesday ☐ Thursday ☐ Friday ☐ Saturday ☐ Sunday

25. Follow steps 4-7 as necessary. When you are finished, the schedule should look like this:

Network Feeds of Dr Dean

Network Feed Time 1:06 PM to 1:57:50 PM (PT) every Mo-Fr starting 9/15/2008.

Time-Delayed Broadcast: Local Air Time 1:06 PM to 1:57:50 PM (PT) every Sa starting 11/18/2008.	edit	delete
Time-Delayed Broadcast: Local Air Time 2:06 PM to 2:57:50 PM (PT) every Sa starting 11/17/2008.	edit	delete
Time-Delayed Broadcast: Local Air Time 3:06 PM to 3:57:50 PM (PT) every Sa starting 11/16/2008.	edit	delete
Time-Delayed Broadcast: Local Air Time 4:06 PM to 4:57:50 PM (PT) every Sa starting 11/15/2008.	edit	delete
Time-Delayed Broadcast: Local Air Time 5:06 PM to 5:57:50 PM (PT) every Sa starting 11/14/2008.	edit	delete

Create a new station schedule using this feed...

*Retrieving the serial number and password from your receiver is done by pressing "Set," then scrolling to the SETUP option and pressing "Set" again. Here you will see the serial number and a PWD at the bottom right of the screen. Press "3" to retrieve the password.

=====

=====

General discussion on how to map relays on your XDS receiver:

26. Access <http://myxdsreceiver.premiereradio.com> and input your serial number and password, both of which may be accessed from the front panel of the receiver itself.*

Welcome to the Affiliate Website.

First-time visitors: Sign in using your receiver serial number and the daily password issued by your receiver.
 Return visitors: Sign in using your receiver serial number and friendly password. If you lost or did not set a friendly password, sign in as a first-time visitor.

Sign In

Receiver S/N: XDSP-

Password:

Passwords are case sensitive.

27. After entering your sign-in information, you will be prompted to choose the action you wish to perform. Select "Set my Relay Mappings." You will see two boxes, one for the Relay A port and one for the Relay B port, both of which will at first contain the text "No Cue Mappings."

What would you like to do?

☒ View or Change my Schedules.

☐ Set my Password, Time Zone, and other receiver options.

☐ Set my Relay Mappings.

☐ Set my Port Schedules.

Home > Relay Mappings

Cue Relay Mappings for Receiver Serial Number: 301408

Click in a cell in the tables below to expand the cells in that column.

<p>Relay A - DB37M</p> <div style="border: 1px solid #0070C0; padding: 2px; background-color: #FFD700; text-align: center;">No Cue Mappings</div>	<p>Relay B - DB37M</p> <div style="border: 1px solid #0070C0; padding: 2px; background-color: #FFD700; text-align: center;">No Cue Mappings</div>
---	---

28. Click the "Edit" button, and you will see a grid containing 16 columns, one for each relay number. Here, you will input a relay code appropriate to the show you are scheduling for broadcast. For simplicity it is suggested that all Local Break relays be input under Relay 1, all Network Liners under Relay 2, etc. However, the wiring needs of your station may dictate another arrangement. It is ultimately up to you. To obtain the needed relay codes, go to <http://engineering.premiereradio.com/> and click on the "XDS Relay Mapping" tab on the left side of the screen. When you are finished, it will look similar to the picture below:

Cue Relay Mappings for Receiver Serial Number: 301408

Click in a cell in the tables below to expand the cells in that column.

Save Cancel

Relay A - DB37M

Rly 1	Rly 2	Rly 3	Rly 4	Rly 5	Rly 6	Rly 7	Rly 8	Rly 9	Rly 10	Rly 11	Rly 12	Rly 13	Rly 14	Rly 15	Rly 16
C2CLOCAL	C2C	C2C	C2C												
LSLOCAL	LSM	LSF	LSL												

Relay B - DB37M

Rly 1	Rly 2	Rly 3	Rly 4	Rly 5	Rly 6	Rly 7	Rly 8	Rly 9	Rly 10	Rly 11	Rly 12	Rly 13	Rly 14	Rly 15	Rly 16

29. When your relays have been input, click on the "Save" button. You will be returned to the previous screen, where the newly input relays will be displayed. It should be noted here that, while only two rows are at first visible, clicking "Edit" again will make more available. This will continue to happen as needed. It should also be noted that **the mapping codes must be entered exactly as they appear on the list.**

30. One final point to be made is the answer to a recurring question that has come up over the course of development. Broadcasting two different Premiere syndicated programs from different ports simultaneously (as in the case of multiple cluster stations sharing the same receiver) may cause relay closures for these shows to interfere with one another. For example, if you have the Rush Limbaugh show broadcasting live on station ABCD from Port A, and Jim Rome on station WXYZ from Port B, the above pictured relay map will become problematic. If you have a situation like this, the problem can be solved by moving one set of relay codes to Port B, or to another number group on Port A (5-9 for example). It all depends on the desired wiring arrangement in your individual studio.

*Retrieving the serial number and password from your receiver is done by pressing "Set," then scrolling to the SETUP option and pressing "Set" again. Here you will see the serial number and a PWD at the bottom right of the screen. Press "3" to retrieve the password.

=====

How to record a program and playback later using the Delilah Show as an example:

The following tutorial will explain, step by step, how to schedule Delilah on your XDS PRO4-P satellite receiver, either for immediate broadcast or for later playback. This method applies to every Delilah program.

31. Access <http://myxdsreceiver.premiereradio.com> and input your serial number and password, both of which may be accessed from the front panel of the receiver itself.*

Welcome to the Affiliate Website.

First-time visitors: Sign in using your receiver serial number and the daily password issued by your receiver.
 Return visitors: Sign in using your receiver serial number and friendly password. If you lost or did not set a friendly password, sign in as a first-time visitor.

Sign In

Receiver S/N: XDSP-

Password:

[Login](#)

Passwords are case sensitive.

32. After entering your sign-in information, you will be prompted to choose the action you wish to perform. Select "View or Change my Schedules." You will be presented with a list of stations assigned to your receiver. Choose the station on which you carry Delilah.

What would you like to do?

☒ View or Change my Schedules.

☐ Set my Password, Time Zone, and other receiver options.

☐ Set my Relay Mappings.

☐ Set my Port Schedules.

[OK](#) [Cancel](#)

Please select the station whose schedule you wish to view or change

ZJAS-FM

ZTER-FM

ZJAS-FM

ZJEN-FM

ZDAN-FM

33. A calendar view of your programming schedule should now be visible. Click on the "Program List" tab at the upper left corner of the screen. You will see a list of programs authorized to your receiver:

Please select a program to view its network feeds and scheduled show times.

Delilah

The Sean Hannity Program

Glenn Beck

Dr Laura

Rush Limbaugh

Jim Rome

Fox 5 Min News

Dr Dean

Delilah

Test Channel

[Cancel](#)

34. Select "Delilah" and click OK. Three hours will be available for scheduling, as pictured below. Click "Create a new station schedule..."

Network Feeds of Delilah on ZJAS-FM Select New Program

Network Feed Time 3:59:58 PM to 4:59:57 PM (PT) every Mo-Fr starting 9/18/2008.
 Create a new station schedule using this feed...

Network Feed Time 4:59:58 PM to 5:59:57 PM (PT) every Mo-Fr starting 9/18/2008.
 Create a new station schedule using this feed...

Network Feed Time 5:59:58 PM to 6:59:57 PM (PT) every Mo-Fr starting 9/18/2008.
 Create a new station schedule using this feed...

Network Feed Time 6:59:58 PM to 7:59:57 PM (PT) every Mo-Fr starting 9/18/2008.
 Create a new station schedule using this feed...

Network Feed Time 7:59:58 PM to 8:59:57 PM (PT) every Mo-Fr starting 9/18/2008.
 Create a new station schedule using this feed...

35. The Schedule Editor is now displayed. If you wish to delay the show for a later time, click the "Broadcast the program delayed..." radio button. In the "Local Air Start" window, type in the time of day in which you wish to air the program. Click "Add." If you intend to broadcast the program live, simply click the "Add" button at the bottom of the screen. You will be returned to the scheduling screen. Repeat this step for each hour of the program.

Edit Schedule

Schedule 'Delilah ' on ZJAS-FM

Network Feed Time 3:59:58 PM to 4:59:57 PM (PT) every Mo-Fr starting 9/18/2008.

What would you like to do with this program?

☐ Broadcast the program **live** at the time of the Network Feed.

☒ Broadcast the program **delayed** by automatically capturing the program and then broadcasting it at a Local Air Time of my choice.

☐ Capture the program (record) to a file to manually play it back later using M&C command or Opto.

Set which Local Air Times to broadcast for the delayed program.

Local Air Start

Local Air End ☒ Use Complete Feed

Network Feed starts at 3:59:58 PM and ends at 4:59:57 PM (PT).

This schedule will play the entire network feed delayed 3:00:00 (HH:MM:SS) from the network feed.

Check the network feed days to use for this schedule.

☒ Monday ☒ Tuesday ☒ Wednesday ☒ Thursday ☒ Friday ☐ Saturday ☐ Sunday

36. When you are finished, your schedule should look similar to the picture below. Simply click "Commit schedule to receiver," and you are finished.

Network Feeds of Delilah on ZJAS-FM Select New Program

Network Feed Time 3:59:58 PM to 4:59:57 PM (PT) every Mo-Fr starting 9/18/2008.	
Time-Delayed Broadcast: Local Air Time 6:59:58 PM to 7:59:57 PM (PT) every Mo-Fr starting 11/19/2008.	edit delete
Create a new station schedule using this feed...	
Network Feed Time 4:59:58 PM to 5:59:57 PM (PT) every Mo-Fr starting 9/18/2008.	
Time-Delayed Broadcast: Local Air Time 7:59:58 PM to 8:59:57 PM (PT) every Mo-Fr starting 11/19/2008.	edit delete
Create a new station schedule using this feed...	
Network Feed Time 5:59:58 PM to 6:59:57 PM (PT) every Mo-Fr starting 9/18/2008.	
Time-Delayed Broadcast: Local Air Time 8:59:58 PM to 9:59:57 PM (PT) every Mo-Fr starting 11/19/2008.	edit delete
Create a new station schedule using this feed...	
Network Feed Time 6:59:58 PM to 7:59:57 PM (PT) every Mo-Fr starting 9/18/2008.	
Time-Delayed Broadcast: Local Air Time 9:59:58 PM to 10:59:57 PM (PT) every Mo-Fr starting 11/19/2008.	edit delete
Create a new station schedule using this feed...	
Network Feed Time 7:59:58 PM to 8:59:57 PM (PT) every Mo-Fr starting 9/18/2008.	
Time-Delayed Broadcast: Local Air Time 10:59:58 PM to 11:59:57 PM (PT) every Mo-Fr starting 11/19/2008.	edit delete
Create a new station schedule using this feed...	

Q: Is there a simple way I can check to see if my receiver audio wiring is correctly phased?

A: Yes, tune to the Test Channel where there is a barker between the music that pans left and right channel.

Q: Is there a simple way to test my relays?

A: Yes, you can manually fire your relays and check them from the front panel – see section 3.2.2.3 Relay set-up.

Q: What is the USB port used for?

A: Future use, currently inactive.

Q: When will the PAD data be available?

A: Soon, check website for updates

Q: Will StarFetch still work?

A: Yes, it will work exactly as before but you will need to point it to the XDS receiver instead of the EDAS card